

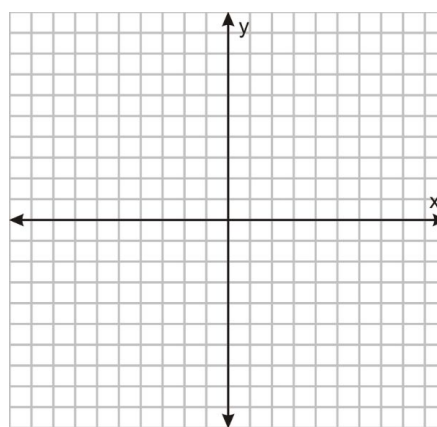
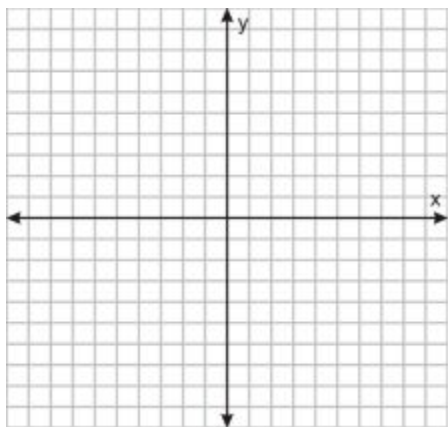
List the transformations and graph each equation.

1) $y = -\frac{1}{2}(x - 6) + 4$

2) $y - 2 = \frac{1}{2}(x + 7)^2 - 4$

Transformations:

Transformations:



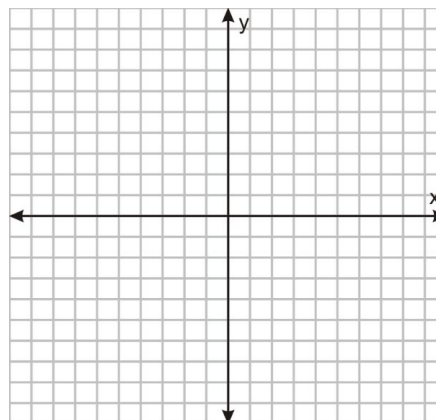
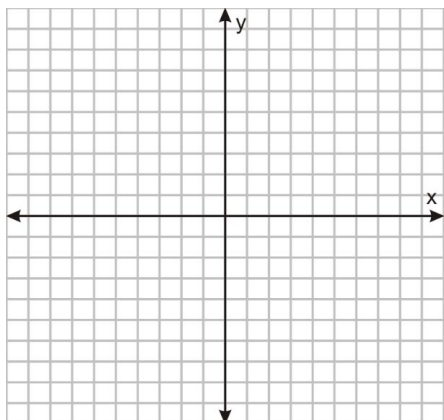
Graph the piecewise functions.

3)

$$f(x) = \begin{cases} 4, & x < -4 \\ x, & 0 \leq x < 4 \\ -\frac{1}{2}x - 4, & x > 4 \end{cases}$$

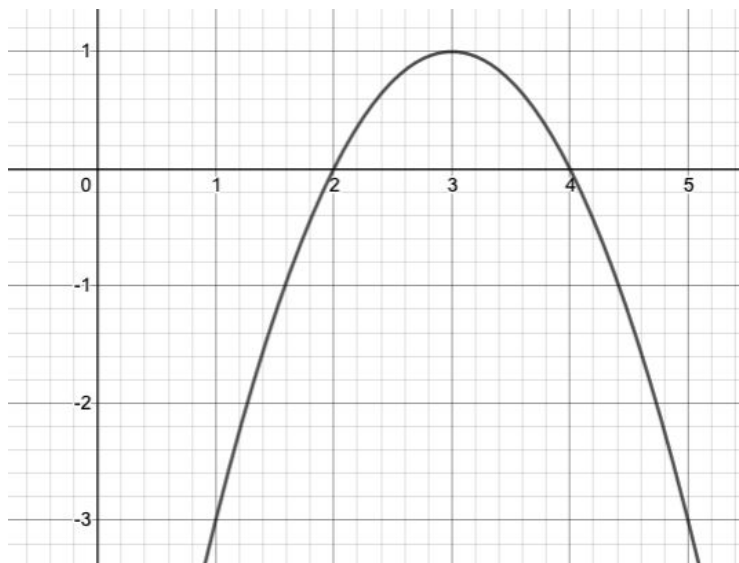
4)

$$f(x) = \begin{cases} -x + 1, & x < 1 \\ |x - 3| + 1, & x > 1 \end{cases}$$

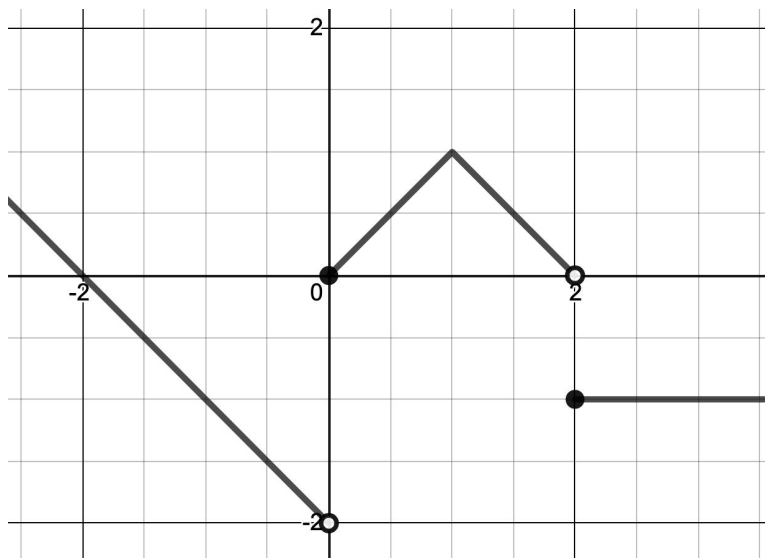


Write the equation for the functions below.

5)



6)



****Sample solutions can be found on graysonmath.com.